

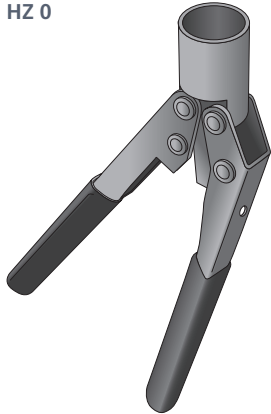
Auslinkzange / Punch tool for curtain tracks

Auslinkzange ohne Stanzkopf
Punch tool without head

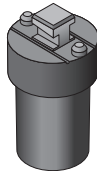
Stanzkopf mit ganzem Stempel
Head with entire stamp

Stanzkopf mit halbem Stempel
Head with semi-stamp

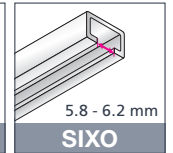
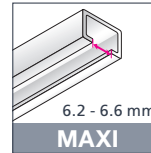
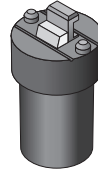
HZ 0



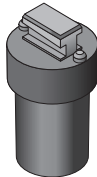
HZ 1



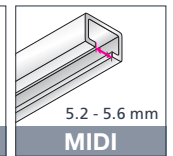
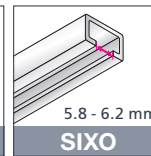
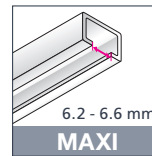
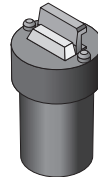
HZ 2



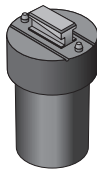
HZ 3



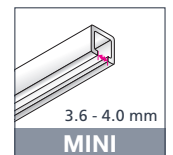
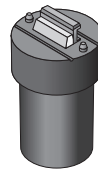
HZ 4



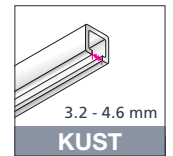
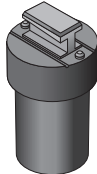
HZ 5



HZ 6



HZ 7

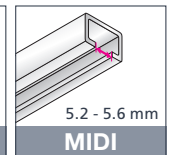
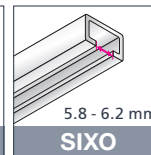
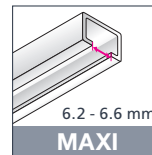
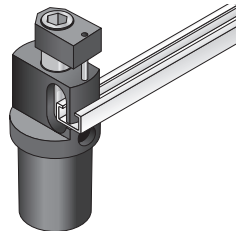
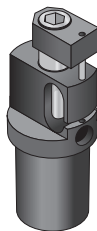


- für alle gängigen Schienen-größen einsetzbar
- sehr einfache Handhabung
- hohe Zeitersparnis durch schnelles Montieren und Auslinken
- Einhand-Auslinkung dank geringer Griff-Spreizung
- auslinken in jedem Winkel mithilfe drehbarer Stanzköpfe
- selbstausrichtende Mechanik für exakte Stanzungen

- fits all popular track sizes
- very easy to use
- saves time through fast installation and punching
- one-hand punching possible thanks to narrow grip angle
- rotatable punch heads enable punching at any angle
- self-aligning mechanism for precise punching

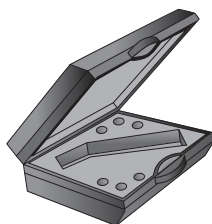
Lochstanzkopf für Schrauben Ø 2.6 mm
Head to punch Ø 2.6 mm holes

HZ 10



Koffer für Auslinkzange, leer
Tool kit box, empty

HZ 12



Nur für Kunststoffschiene
Only for plastic track